

WORKPLACE EXPERIENCE EXCHANGE CAMP I

WWE Camp I

JUNE 5 - 8TH, 2018



A program of:
THE ORCHARD
FOUNDATION

Funded by:
 **THE RAPIDES FOUNDATION**

The Workplace Experience Exchange Camp I is an immersive summer experience for educators, connecting classroom teaching to real-world business and industry trends, skill requirements, experiences, and opportunities.

GET MORE INFO

www.theorchardfoundation.org
www.rapidesfoundation.org

WHY WEE CAMP I

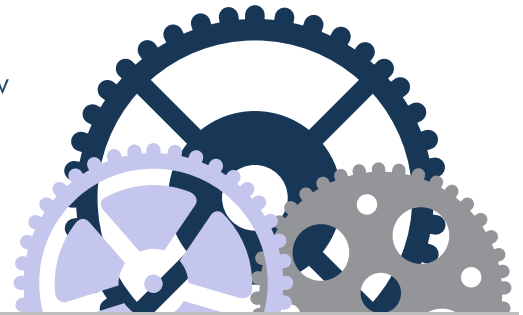
The increasing body of literature indicates that educators become better at their jobs when they can relate real-world examples to the content delivered to their students. Thus, WEE Camp was born as Central Louisiana's first industry externship program for educators.

WEE Camp is often the first time that educators step into the workplace, and view regional jobs through their students' eyes. Until 2015, this opportunity was not available to Central Louisiana educators.

At WEE Camp, educators cultivate a new appreciation for the skills and proficiencies their students will need in future careers. The educational goal is to increase educators' abilities to connect theory and practice, increasing the relevance of student learning. This includes bringing an understanding of workplace practices, policies, and skills into the classroom.

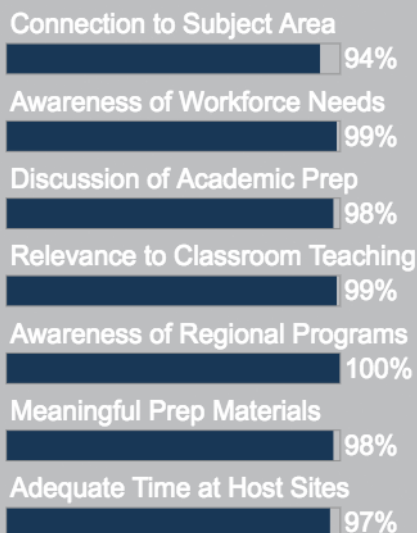
WEE Camp launched a new project this year wherein WEE Camp educators and their students participate in two Nepris sessions and two field trips or visits with subject matter experts. Educators have the opportunity to strengthen industry partnerships that were initiated through the camp, and students further develop their skills by engaging directly with industry partners.

As educators begin to reflect on adjusting their classroom practice to incorporate these new concepts, their students will begin to build new proficiencies not only in content but also in skills such as problem-solving, leadership, and collaboration with an emphasis on real-world applications.

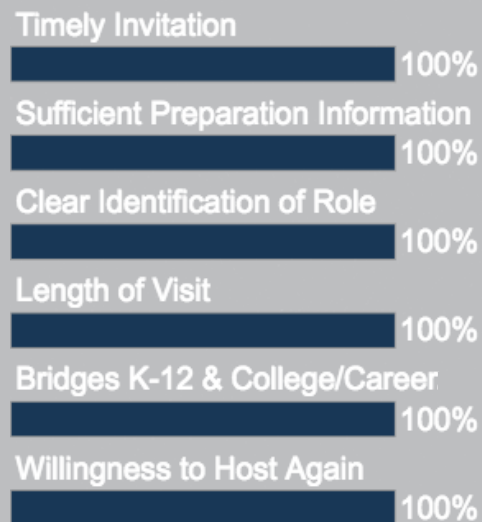


What Are They Saying?

Educators



Host Sites

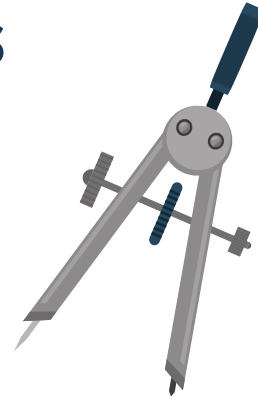


*Results from post-WEE Camp I satisfaction surveys

How We Do It

INDUSTRY PARTNERSHIPS

In 2018, 11 Central Louisiana businesses partnered with WEE Camp I. From manufacturing to healthcare, educators are connected to a broad cross-section of businesses.

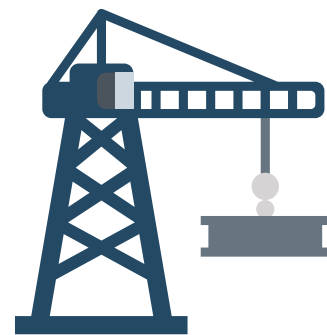


EDUCATORS

19 educators were accepted to WEE Camp I, representing 16 schools in 6 districts. They came from diverse disciplines: STEM fields, Journey to Careers, business, and more.

COLLABORATION

Educators forge connections with industry and gain other practical knowledge of the workplace. They bring their real-world experiences back into classrooms for the benefit of the students.



WEE CAMP FEEDBACK

I believe it is imperative that the teachers realize what these future employers are looking for in potential future employees. It was so informative to see what goes on in the working world, outside the daily classroom teaching, so that a connection can be made between the two for a productive future workforce.

JAMIE HOLMES, EDUCATOR

I plan on using Nepris to inspire my students to do more, to be more, to dream and to plan for their future. I'd finally like to answer a question I often hear from students - "when will I ever use this?" I will inspire my students to be successful after high school and encourage them to build a career around their strengths.

ANGELA CAZIERE, EDUCATOR

I will use Nepris to build awareness of industries available to students, encourage more teachers to ask for access to this platform, and facilitate Nepris to several different classroom environments. This exposure for rural students will be such an asset. The entire week flew by. This was the most relevant training I have ever been to (and I have been to several!).

KATHY CANERDAY, EDUCATOR

We are thankful for touring these companies and receiving all this information - I've visited several major companies that want to train our kids. The WEE Camp sites appreciated that we came and wanted to learn. My eyes have been opened and I've learned so much. This is truly an awesome experience and is so much better than staff development. This is so rewarding!

TAMMY WILBER, EDUCATOR

I think this is a great way to bridge the gap between secondary education and college and career readiness. It certainly helps to communicate and exchange ideas about educating the future workforce.

WAYNE DENLEY, CLEDA, HOST SITE FOR WEE CAMP II



WEE Camp Memories



INDUSTRY PARTNERS



Boise Cascade

